

2018 #REALCOLLEGE SURVEY

SCHOOL REPORT

APRIL 2019



For College, Community, and Justice

HOPE4COLLEGE.COM

2018 #REALCOLLEGE SURVEY SCHOOL REPORT FOR SAN DIEGO CONTINUING EDUCATION

**Report prepared by the Hope Center for College, Community, and
Justice at Temple University**

April 2019

OVERVIEW

Invitations to complete the questionnaire were sent by email to approximately 20,300 students from San Diego Continuing Education and 260 students participated. Thus, the estimated response rate is 1.3%. The survey results indicate:

- 33% of respondents were food insecure in the prior 30 days
- 52% of respondents were housing insecure in the previous year
- 17% of respondents were homeless in the previous year

For more information on the research methodology and survey participants, please refer to the appendices of the National 2018 #RealCollege Survey report.

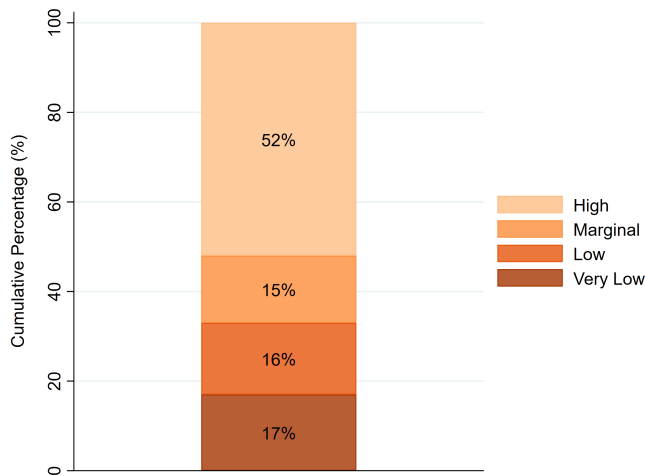
PREVALENCE OF BASIC NEEDS INSECURITY

Food Insecurity

Food insecurity is the limited or uncertain availability of nutritionally adequate and safe food, or the ability to acquire such food in a socially acceptable manner. The most extreme form is often accompanied with physiological sensations of hunger. We assessed food security among students using the U.S. Department of Agriculture's (USDA) 18-item set of questions.

During the 30 days preceding the survey, approximately 33% of survey respondents at San Diego Continuing Education experienced low or very low levels of food security (Figure 1). Moreover, 39% of survey respondents at San Diego Continuing Education worry about running out of food before having money to buy more and 35% cannot afford to eat balanced meals.

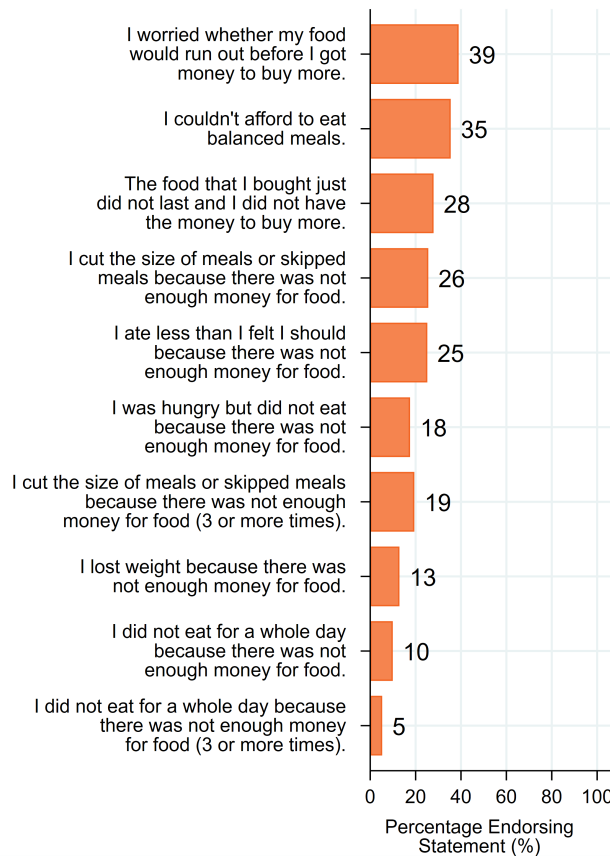
Figure 1. Food Security Among Survey Respondents at San Diego Continuing Education



Source: 2018 #RealCollege Survey

Notes: According to the USDA, students at either low or very low food security are termed food insecure. For the full list of questions used to measure food security, see our full report available at www.hope4college.com. Cumulative percentage may not add up to 100 due to rounding error.

Figure 2. Food Insecurity Among Survey Respondents at San Diego Continuing Education



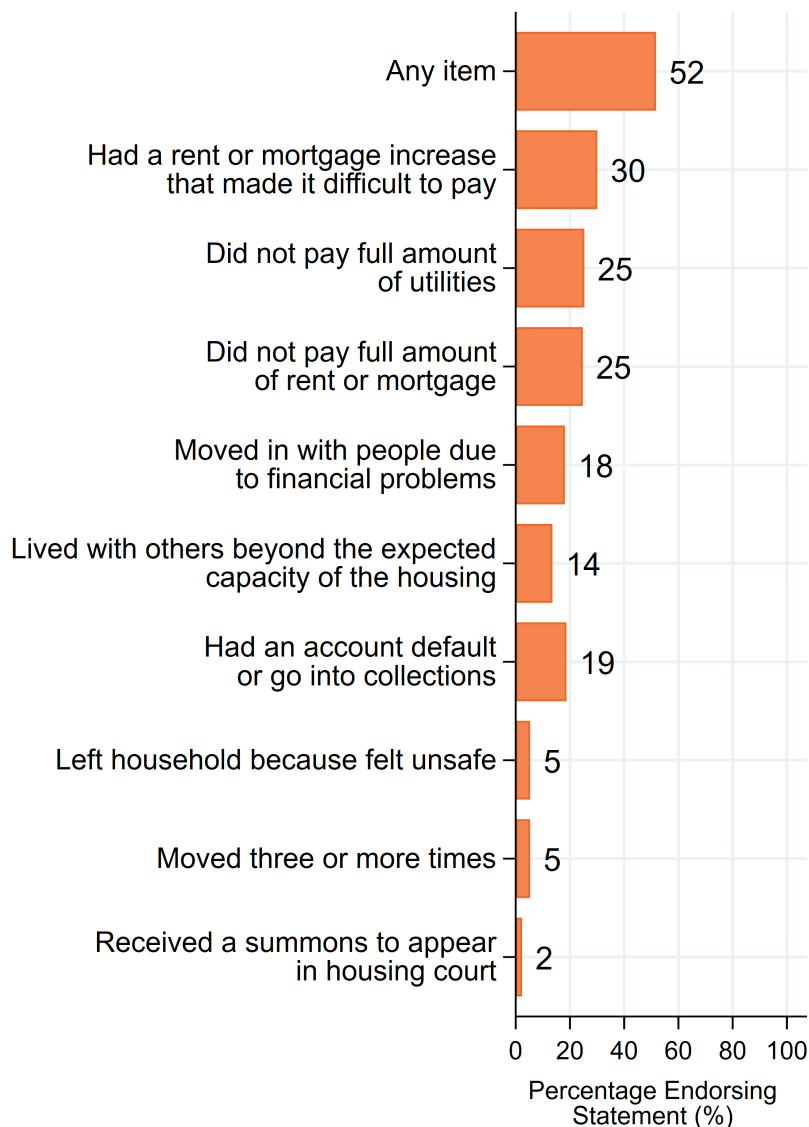
Source: 2018 #RealCollege Survey

Housing Insecurity

Housing insecurity includes a broad set of challenges such as the inability to pay rent or utilities or the need to move frequently. All of these challenges affect students, and results suggest they are more likely to suffer some form of housing insecurity than to have all their needs met during college. Housing insecurity among students was assessed with a nine-item set of questions developed by the Hope Center. Students are classified as housing insecure if they answered affirmatively to experiencing at least one of those items in the previous year.

How prevalent is housing insecurity at San Diego Continuing Education? As displayed below, 52% of survey respondents are housing insecure (Figure 3).

Figure 3. Housing Insecurity Among Survey Respondents at San Diego Continuing Education



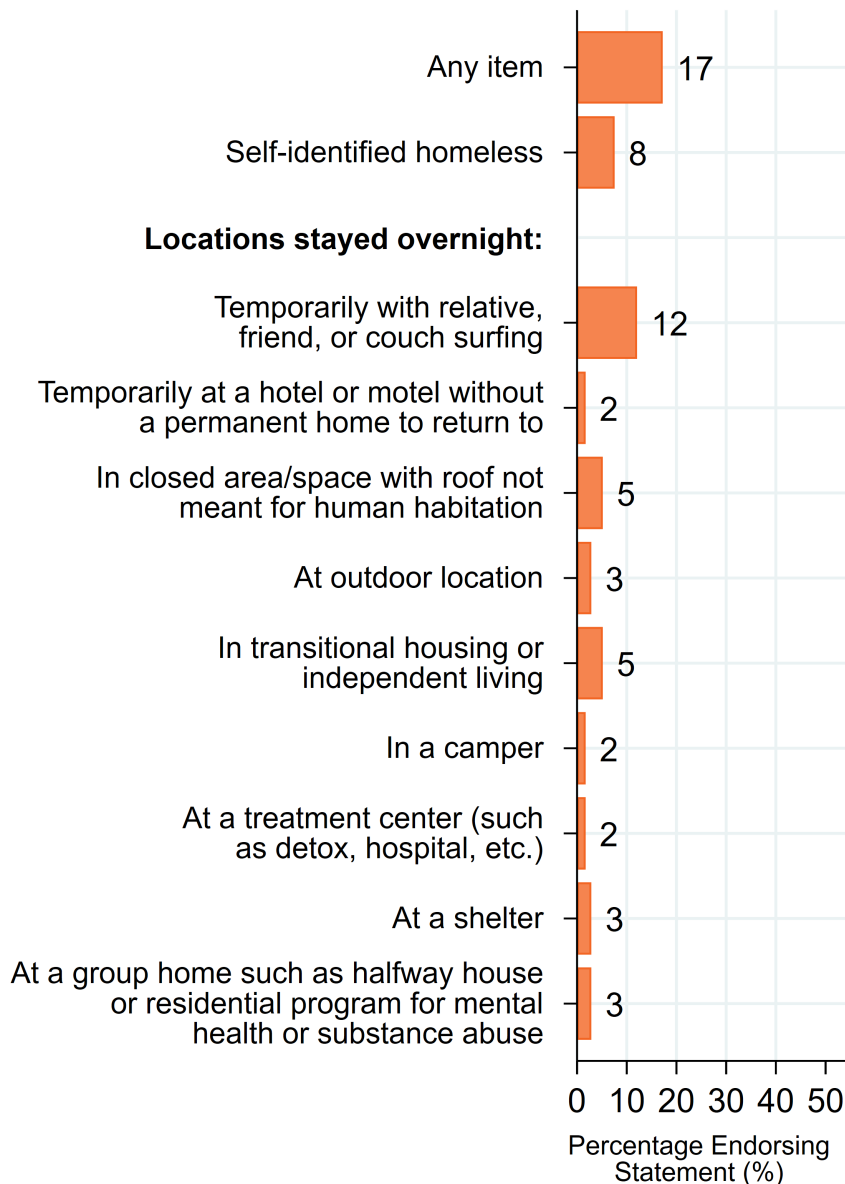
Source: 2018 #RealCollege Survey

Homelessness

Homelessness means that a person does not have a stable place to live. Students were identified as homeless if they responded affirmatively to a question asking if they had been homeless or they experienced living conditions that are considered signs of homelessness in the previous year. Homelessness among students was assessed with a tool developed by California State University researchers.

How prevalent is homelessness at San Diego Continuing Education? As displayed below, 17% of survey respondents experience homelessness (Figure 4).

Figure 4. Homelessness Among Survey Respondents at San Diego Continuing Education



Source: 2018 #RealCollege Survey

CONCLUSION

The #RealCollege survey affirms what has been evident to many college administrators, faculty, staff, and students for years: basic needs insecurity is a condition challenging many undergraduates pursuing credentials. The scope of the problem described here is substantial and should be cause for a systemic response.

ABOUT US

The Hope Center for College, Community, and Justice at Temple University is home to an action research team using rigorous research to drive innovative practice, evidence-based policymaking, and effective communications to support #RealCollege students. For more information, visit <https://www.hope4college.com>.

CONTACT INFORMATION

If you have questions about this report, please contact the Hope Center Research Team at hopesrvy@temple.edu.